





# Da 50 anni mettiamo al primo posto i bisogni dei nostri clienti.

/ For 50 years we put first  
the needs of our customers.

Il bagno è un ambiente importante. Spesso richiede soluzioni pratiche e oggi sempre di più queste soluzioni esigono anche un ottimo design. Estetica e comfort. Intimità e benessere. Piacere e funzionalità. In un bagno ci si spoglia delle apparenze e si dialoga con se stessi cercando il relax necessario. Soprattutto dopo una giornata di duro lavoro. Quello che desideriamo è che i nostri prodotti possano aiutare le persone a dimenticare la fretta di cui sono fatti i giorni. Anche per un breve istante.

*The bathroom is an important space of a home. It often requires practical solutions. Today even more these solutions also need to be of excellent design. Aesthetic and comfort. Privacy, Wellness and Comfort. Pleasure and functionality. In a bathroom we get undressed of the appearances, we talk with ourselves trying to find relaxation, freshness and comfort especially after an intensive day of work. Our desire is that our products help people switch off from everyday life and take a pleasant break even if only for a brief moment.*



# Sistema di industria 4.0. La nostra qualità trasparente.

/ 4.0 Industrial System.  
Our transparent quality.

Possiamo affermare a pieno titolo di essere entrati nella quarta rivoluzione industriale avvalendoci del sistema di industria 4.0. Se parliamo di trasparenza c'è un duplice motivo: abbiamo ridefinito gli schemi produttivi, accorciato i tempi di lavorazione e reso i nostri prodotti tracciabili in ogni fase.

*We can fully affirm that we have entered the fourth industrial revolution using the system of industry 4.0. Talking about transparency, we have redefined the patterns of production, shortened the processing times and made all our products traceable in every phase.*



# Equilibrio, armonia, funzionalità: la danza dei materiali è la forma d'arte che preferiamo.

/ Balance, harmony, functionality:  
the dance of materials is the art form  
that we prefer.

Certo, siamo un po' di parte. Del resto se abbiamo scelto questo lavoro è in virtù di una passione autentica. Ci piace vedere danzare i materiali, osservare come si possano assemblare fra loro con energia e compostezza. Non basta solo la scelta dei singoli materiali, anche il loro abbinamento richiede la giusta valutazione. In base alla nostra esperienza, e abbiamo parecchi anni sulle spalle, possiamo suggerire come trovare il perfetto equilibrio fra le diverse componenti che rientrano nel suo progetto. Quello che più desideriamo è la piena soddisfazione del cliente. Tutto il resto viene dopo.

*Of course, we certainly are a bit impartial. We dedicate ourselves to this activity because we are animated from an authentic, true passion. We like to see the materials dance, observe how they could mix together with energy and composure. Choosing individual materials though is not enough, their combination also requires the right evaluation. Based on our experience we can suggest how to find the perfect balance between the different components belonging to your project. What we most desire is the complete satisfaction of all our customers. Everything else comes later.*

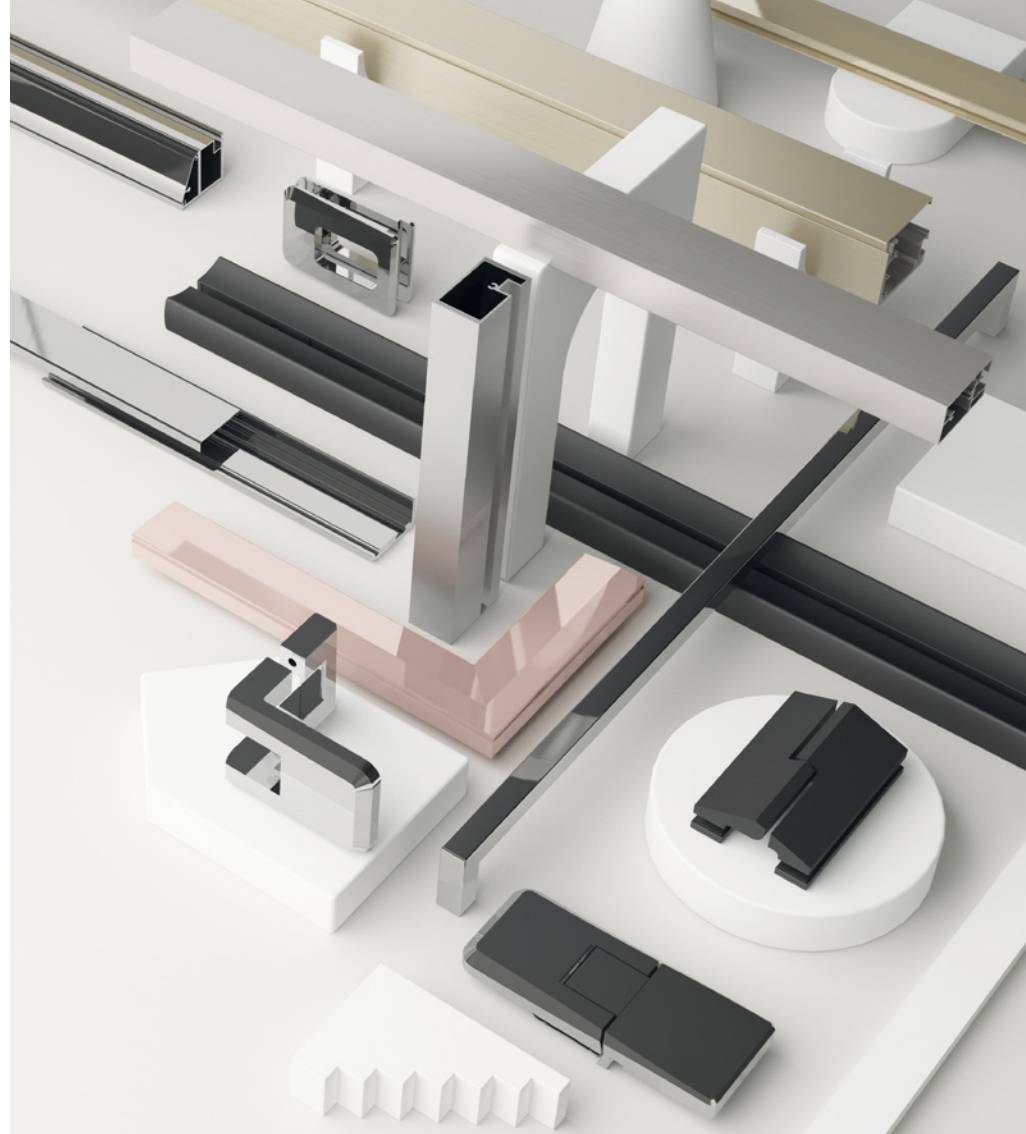


# Easy metal.

/ Easy metal.

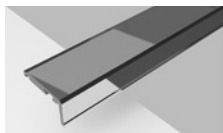
Il metallo sostiene il vetro con vigore, ne esalta le qualità con leggerezza. Lo impreziosisce con i suoi riflessi a volte opachi a volte lucenti, lo accarezza con dolcezza. I nostri metalli, le nostre leghe, trattano il vetro nei migliori dei modi.

*Metal supports Glass vigorously and enhances its qualities gently and softly. It embellishes it with its sometimes dull, sometimes shiny reflections, and caresses it gently. Our metals, our alloys, treat glass in the best way.*

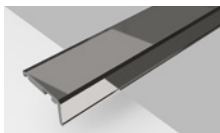


## PROFILI / Profiles

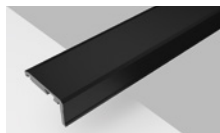
### STANDARD / Standard



**Argento /**  
*Silver*  
A



**Cromo /**  
*Chrome*  
C

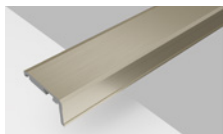


**Nero /**  
*Black*  
N

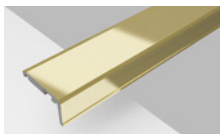


**Bianco Matt /**  
*Matt White*  
W

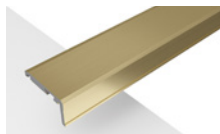
### ANODIZZATI / Anodised



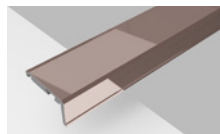
**Bronzo Francese /**  
*French Bronze*  
B



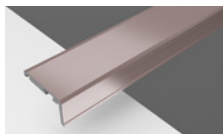
**Oro /**  
*Gold*  
D



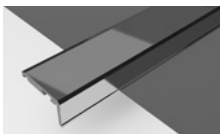
**Oro Matt /**  
*Matt Gold*  
O



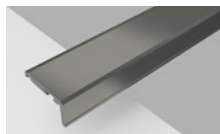
**Oro Rosa /**  
*Rose Gold*  
R



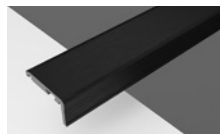
**Oro Rosa Matt /**  
*Matt Rose Gold*  
P



**Titanio /**  
*Titanium*  
H

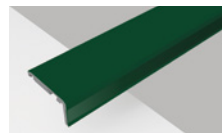


**Titanio Brushed /**  
*Brushed Titanium*  
K

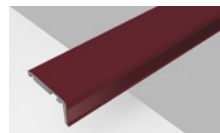


**Nero Brushed /**  
*Brushed Black*  
Q

### LACCATI / Lacquered



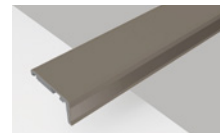
**Muschio /**  
*Musk*  
M



**Borgogna /**  
*Burgundy*  
V

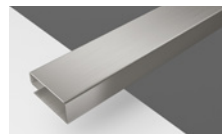


**Terre Toscane /**  
*Terre Toscane*  
J

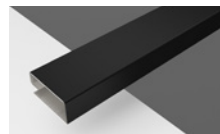


**Avena /**  
*Oats*  
Y

### ACCIAIO AISI 304 / AISI 304 Steel



**Acciaio Satinato /**  
*Satin Steel*  
S



**Acciaio Nero Matt /**  
*Matt Black Steel*  
N

# Glass class.

/ Glass Class.

Il vetro è un materiale plasmabile utilizzato fin dal III millennio a.C. La sua versatilità, la sua trasparenza, la sua inalterabilità chimica lo rendono speciale: il vetro attraversa lo scorrere del tempo senza scomporsi mai. Per questo ha qualcosa di immortale.

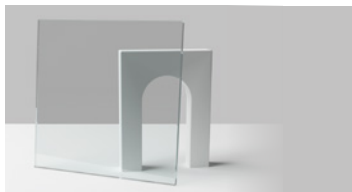
*Glass is a malleable material used since III millennium B.C. Its versatility, transparency and chemical unchangeability make it special. Glass goes through the flow of time without altering. For this reason why it has something immortal.*



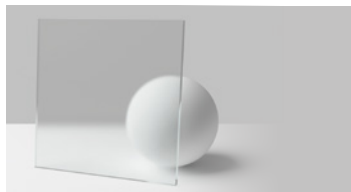


# CRISTALLI

/ Glasses



**Cristallo Trasparente /**  
*Transparent Glass*  
TR



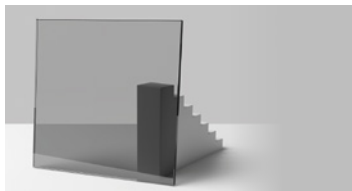
**Cristallo Satinato /**  
*Satin Glass*  
SA



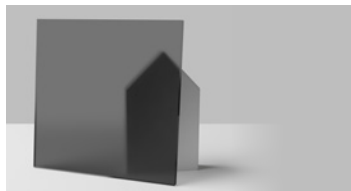
**Cristallo Extra Chiaro /**  
*Extra clear Glass*  
EC



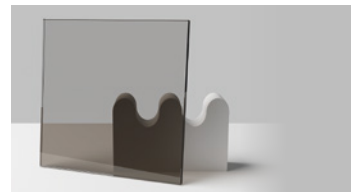
**Cristallo Satinato Extra Chiaro /**  
*Extra-clear Satin Glass*  
SE



**Cristallo Grigio Fumè /**  
*Smoke Grey Glass*  
GR



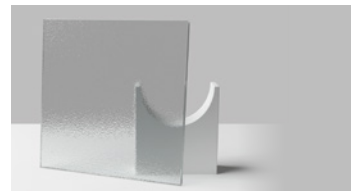
**Cristallo Grigio Satinato /**  
*Satin Grey Glass*  
GS



**Cristallo Bronzo Parsol /**  
*Parsol Bronze Glass*  
BP



**Cristallo Stopsol /**  
*Stopsol Glass*  
SC



**Cristallo Stampato /**  
*Textured Glass*  
ST

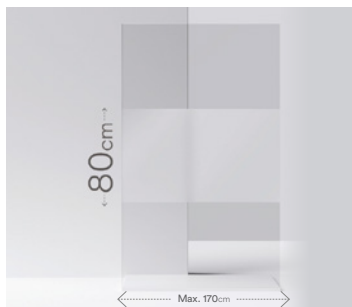


**Cristallo Stripes /**  
*Stripes Glass*  
FM

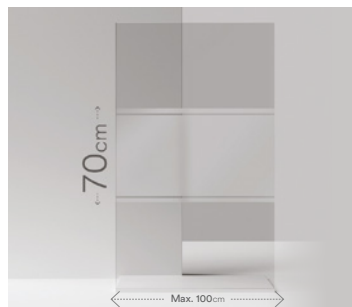


**Cristallo Nuvola /**  
*Nuvola Glass*  
NV

## SERIGRAFIE / Silkscreen Printings



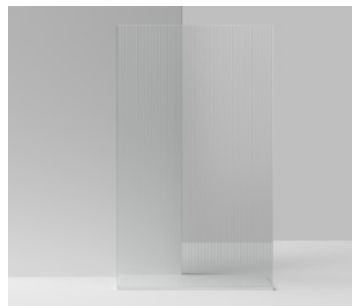
**Fascia satinata h.800 / \*\***  
*Frosted band h.800*  
FS



**Fascia a righe h.700 / \*\***  
*Strip band h.700*  
FT



**Scratch /**  
*Scratch*  
FF



**Applicazione Stripe / \***  
*Stripe Application*

## PIATTI DOCCIA / Shower Trays



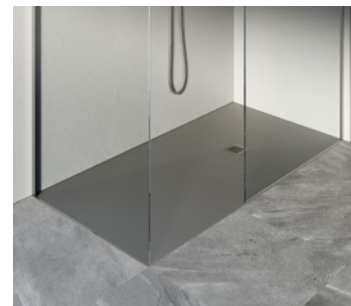
**Bianco opaco /**  
*Matt white*



**Tortora /**  
*Taupe*



**Grigio opaco /**  
*Matt grey*



**Nero opaco /**  
*Matt black*



# Indice

/ Index

- 20 **Eclettica Box Doccia**  
*Eclettica Shower Enclosure*
- 28 **Moon**
- 36 **Open**
- 46 **La 8**
- 56 **H2**
- 68 **3 Mila**
- 78 **Quattro**
- 86 **Classica**
- 98 **Mille**
- 108 **6000**
- 118 **Pareti Vasca**  
*Bath Screens*

# ECLETTICA

## Box doccia

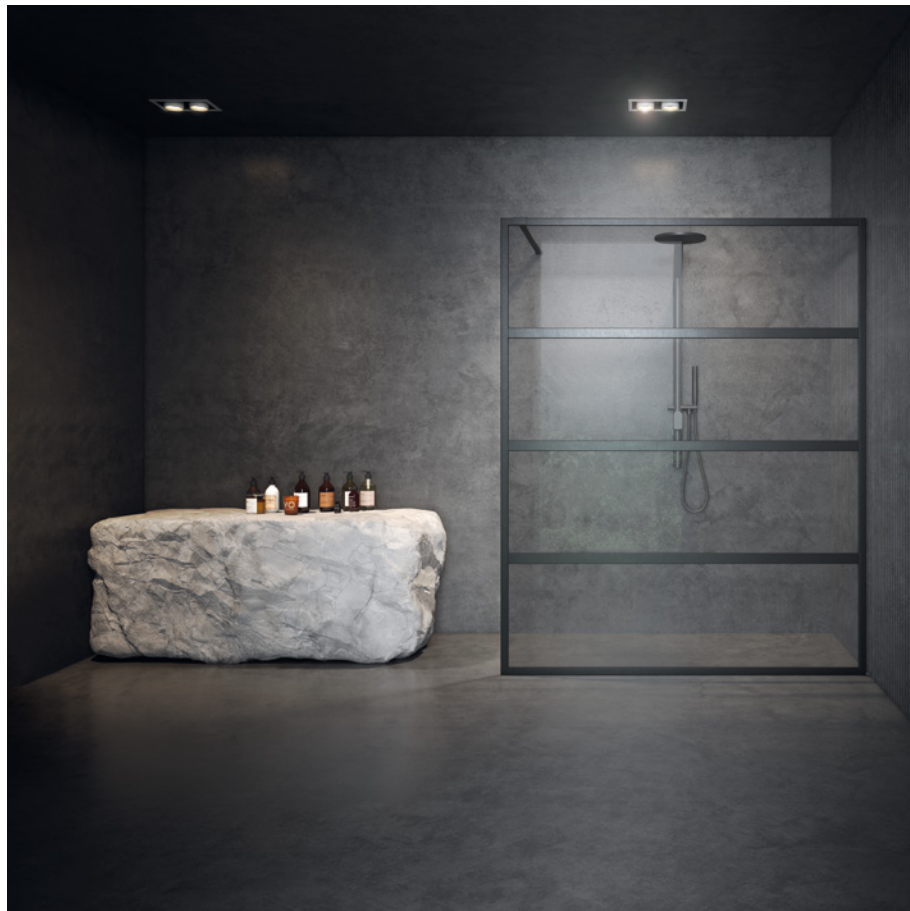
/ Shower enclosure



Il box doccia Eclettica è la naturale continuazione del progetto di pareti modulari Eclettica. I materiali e finiture in comune ci permettono di offrire un total look nell'abbinamento con le pareti componibili.

*The Eclettica shower enclosure is the natural continuation of the Eclettica modular wall project. The common materials and finishes allow us to offer a total look in combination with the modular walls.*







## CONFIGURAZIONI

/ Configurations



Walk-in



Nicchia  
/ Niche



Nicchia + pann.  
/ Niche + panel



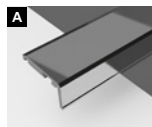
Angolo + pann.  
/ Corner + panel



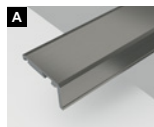
Doppia porta  
/ Double door

## PROFILI

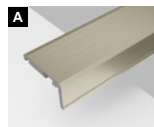
/ Profiles



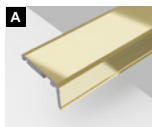
**H** - Titanio  
/ Titanium



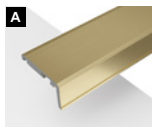
**K** - Titanio Brushed  
/ Brushed Titanium



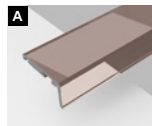
**B** - Bronzo Francese  
/ French Bronze



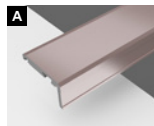
**D** - Oro  
/ Gold



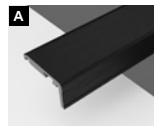
**O** - Oro Matt  
/ Matt Gold



**R** - Oro Rosa  
/ Rose Gold



**P** - Oro Rosa Matt  
/ Matt Rose Gold



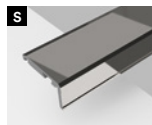
**Q** - Nero Brushed  
/ Brushed Black



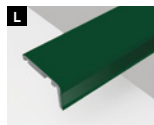
**N** - Nero  
/ Black



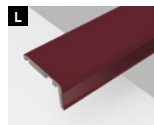
**W** - Bianco Matt  
/ Matt White



**C** - Cromo  
/ Chrome



**M** - Muschio  
/ Musk



**V** - Borgogna  
/ Burgundy



**J** - Terre Toscane  
/ Terre Toscane



**Y** - Avena  
/ Oats

## CRISTALLI

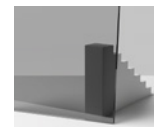
/ Glasses



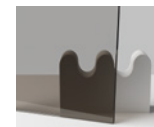
**TR** - Trasparente  
/ Transparent



**SA** - Satinato  
/ Satin



**GR** - Grigio Fumè  
/ Smoke Grey



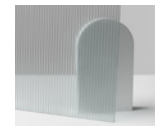
**BP** - Bronzo Parsol  
/ Bronze Parsol



**SC** - Stopsol  
/ Stopsol



**EC** - Extra-Chiaro  
/ Extra-Clear



**FM** - Stripes  
/ Stripes



**SE** - Satin. Extra Chiaro  
/ Extra-Clear Satin



**GS** - Grigio Satinato  
/ Satin Grey



**Applicaz. Stripe**  
/ Stripe Application



**NV** - Nuvola  
/ Nuvola



**FS** - Fascia satinata  
/ Frosted band



**FF** - Scratch  
/ Scratch



**FT** - Fascia a righe  
/ Strip band



Possibilità di trattamento Brillbox®  
/ Brillbox® treatment available



Standard / Standard



Laccato / Lacquered



Anodizzato / Anodised



Acciaio AISI / AISI Steel



Serigrafie / Silk-screen Printing

# MOON



Concreto, versatile, contemporaneo:  
il fascino senza tempo dell'acciaio trova sempre nuovi  
modi di reinventarsi. Spazzolato o Nero Opaco, è una  
finitura che riesce sempre ad esprimersi al meglio in  
ogni stile e contesto abitativo.

*Concrete, versatile, contemporary: the timeless  
charm of steel always finds new ways to reinvent itself.  
Brushed or Matt Black, this finishing can always  
express itself at its best in every style and environment.*









## CONFIGURAZIONI

/ Configurations



Walk-in



Angolo  
*/ Corner*



Angolo +  
pannello  
*/ Corner + panel*



Nicchia  
*/ Niche*



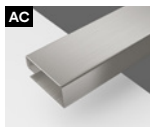
Nicchia  
+ pannello  
*/ Niche + panel*



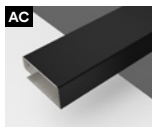
Doppia porta  
*/ Double door*

## PROFILI

/ Profiles



**S** - Acciaio Satinato  
/ *Satin Steel*



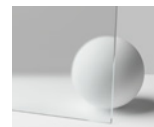
**N** - Acciaio Nero Matt  
/ *Matt Black Steel*

## CRISTALLI

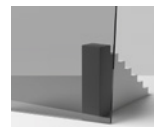
/ Glasses



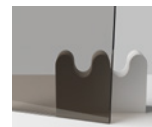
**TR** - Trasparente  
/ *Transparent*



**SA** - Satinato  
/ *Satin*



**GR** - Grigio Fumè  
/ *Smoke Grey*



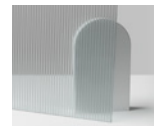
**BP** - Bronzo Parsol  
/ *Bronze Parsol*



**SC** - Stopsol  
/ *Stopsol*



**EC** - Extra-Chiaro  
/ *Extra-Clear*



**FM** - Stripes  
/ *Stripes*



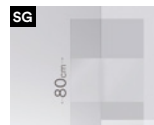
**SE** - Satin. Extra-Chiaro  
/ *Extra-Clear Satin*



**GS** - Grigio Satinato  
/ *Satin Grey*



**NV** - Nuvola  
/ *Nuvola*



**FS** - Fascia satinata  
/ *Frosted band*



**FF** - Scratch  
/ *Scratch*



**FT** - Fascia a righe  
/ *Strip band*



Possibilità di trattamento Brillbox®  
/ *Brillbox® treatment available*

**S** Standard / *Standard*

**L** Laccato / *Lacquered*

**A** Anodizzato / *Anodised*

**AC** Acciaio AISI / *AISI Steel*

**SG** Serigrafie / *Silk-screen Printing*

# OPEN



Aperto, come lo spazio plasmato da un prodotto capace di sottolineare il valore del cristallo 6-8 millimetri, coniugato con l'eleganza delle linee. Disponibile in diverse finiture di cristalli e profili, è la soluzione progettuale che meglio si adatta a contesti sia moderni che eleganti.

*Open, like the space shaped by a product able to emphasize the value of the crystal 6-8 mm, combined with the elegance of the lines. Available in different finishes of crystals and profiles, it is the design solution that best suits both both modern and elegant contexts.*









## CONFIGURAZIONI

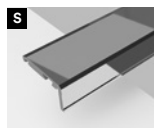
/ Configurations



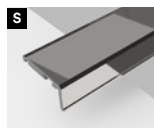
Walk-in

## PROFILI

/ Profiles



**A** - Argento  
/ Silver



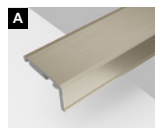
**C** - Cromo  
/ Chrome



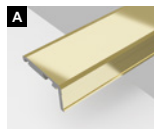
**W** - Bianco Matt  
/ Matt White



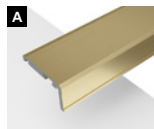
**N** - Nero  
/ Black



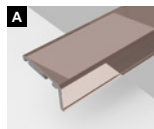
**B** - Bronzo Francese  
/ French Bronze



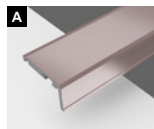
**D** - Oro  
/ Gold



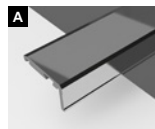
**O** - Oro Matt  
/ Matt Gold



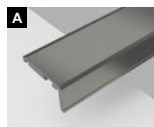
**R** - Oro Rosa  
/ Rose Gold



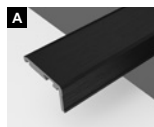
**P** - Oro Rosa Matt  
/ Matt Rose Gold



**H** - Titanio  
/ Titanium



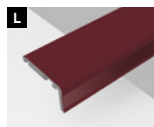
**K** - Titanio Brushed  
/ Brushed Titanium



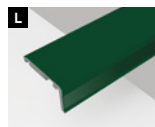
**Q** - Nero Brushed  
/ Brushed Black



**Y** - Avena  
/ Oats



**V** - Borgogna  
/ Burgundy



**M** - Muschio  
/ Musk



**J** - Terre Toscane  
/ Terre Toscane

## CRISTALLI

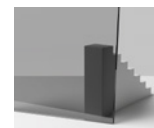
/ Glasses



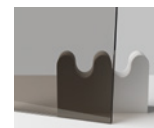
**TR** - Trasparente  
/ Transparent



**SA** - Satinato  
/ Satin



**GR** - Grigio Fumè  
/ Smoke Grey



**BP** - Bronzo Parsol  
/ Bronze Parsol



**SC** - Stopsol  
/ Stopsol



**EC** - Extra-Chiaro  
/ Extra-Clear



**SE** - Satin. Extra-Chiaro  
/ Extra-Clear Satin



**GS** - Grigio Satinato  
/ Satin Grey



**FF** - Scratch  
/ Scratch



**Applicaz. Stripe**  
/ Stripe Application




**NV** - Nuvola  
/ Nuvola



**FS** - Fascia satinata  
/ Frosted band



**FT** - Fascia a righe  
/ Strip band

 Possibilità di trattamento Brillbox®  
/ Brillbox® treatment available

**S** Standard / Standard

**L** Laccato / Lacquered

**A** Anodizzato / Anodised

**AC** Acciaio AISI / AISI Steel

**SG** Serigrafie / Silk-screen Printing



# LA8



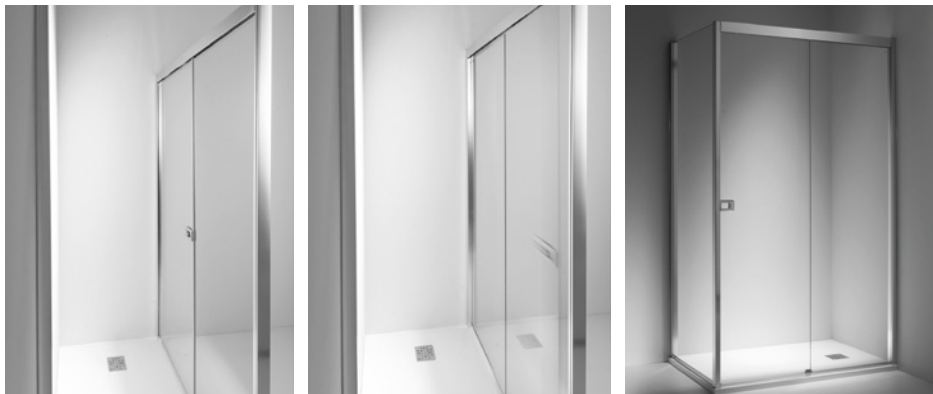
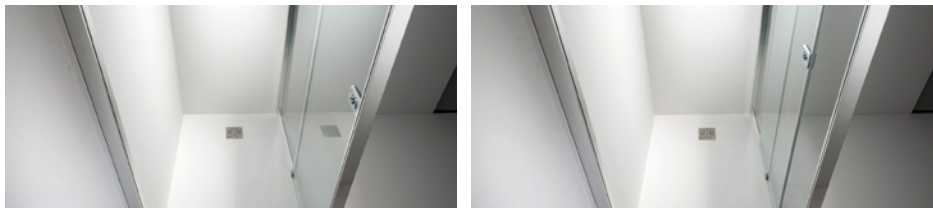
Nella serie La8 ogni movimento risulta semplice, essenziale, perfetto. LA8 è dotata di due sistemi esclusivi di ultima generazione: l'apertura in sicurezza e il più evoluto sistema di chiusura rallentato. Il corpo in cristallo 8 millimetri è perfettamente integrato nella struttura in alluminio a scomparsa.

*In the collection LA8 each movement is simple, essential and perfect. LA8 is equipped with two exclusive innovations of the latest generation: safe opening and the most advanced soft closing system. The 8 mm crystal body easily integrates with the concealed aluminium structure.*









## CONFIGURAZIONI

/ Configurations



**Angolo**  
*/ Corner*



**Angolo  
+ pannello**  
*/ Corner + panel*



**Tre lati**  
*/ Three sides*



**Nicchia**  
*/ Niche*



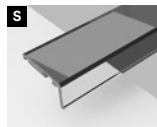
**Nicchia  
+ pannello**  
*/ Niche + panel*



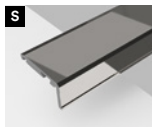
**Doppia porta**  
*/ Double door*

## PROFILI

/ Profiles



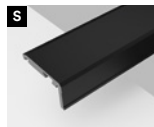
A - Argento  
/ Silver



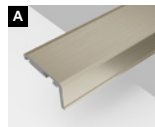
C - Cromo  
/ Chrome



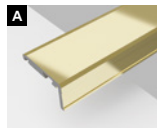
W - Bianco Matt  
/ Matt White



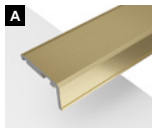
N - Nero  
/ Black



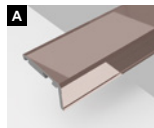
B - Bronzo Francese  
/ French Bronze



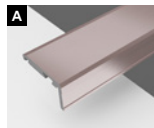
D - Oro  
/ Gold



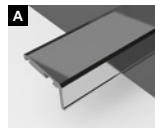
O - Oro Matt  
/ Matt Gold



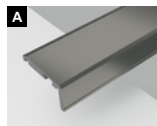
R - Oro Rosa  
/ Rose Gold



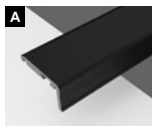
P - Oro Rosa Matt  
/ Matt Rose Gold



H - Titanio  
/ Titanium



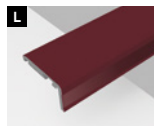
K - Titanio Brushed  
/ Brushed Titanium



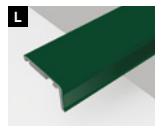
Q - Nero Brushed  
/ Brushed Black



Y - Avena  
/ Oats



V - Borgogna  
/ Burgundy



M - Muschio  
/ Musk



J - Terre Toscane  
/ Terre Toscane

## CRISTALLI

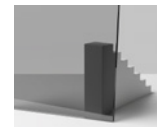
/ Glasses



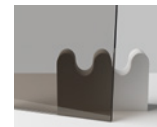
TR - Trasparente  
/ Transparent



SA - Satinato  
/ Satin



GR - Grigio Fumè  
/ Smoke Grey



BP - Bronzo Parsol  
/ Bronze Parsol



SC - Stopsol  
/ Stopsol



EC - Extra-Chiaro  
/ Extra-Clear



SE - Satin. Extra-Chiaro  
/ Extra-Clear Satin



GS - Grigio Satinato  
/ Satin Grey



FF - Scratch  
/ Scratch



Applicaz. Stripe  
/ Stripe Application




NV - Nuvola  
/ Nuvola



FS - Fascia satinata  
/ Frosted band



FT - Fascia a righe  
/ Strip band

 Possibilità di trattamento Brillbox®  
/ Brillbox® treatment available

**S** Standard / Standard

**L** Laccato / Lacquered

**A** Anodizzato / Anodised

**AC** Acciaio AISI / AISI Steel

**SG** Serigrafie / Silk-screen Printing

# H2



Le nostre cabine doccia rappresentano una sintesi perfetta fra tecnologia, qualità e design. Concepite per essere oggetti d'uso semplice, pratico, immediato e durevole nel tempo, i prodotti della linea H2 contemplanano allo stesso tempo un gusto estetico che dona un'intima piacevolezza ai momenti di relax così importanti nel nostro vivere quotidiano.

*Our shower enclosures represent a perfect synthesis between technology, quality and design. The products of the H2 collection are conceived to be long lasting objects of immediate, simple and practical use. At the same time they also embrace an aesthetic taste enhancing the pleasure to the moments of relax so important in our daily life.*













## CONFIGURAZIONI

/ Configurations



**Angolo  
+ pannello**  
*/ Corner + panel*



**Nicchia**  
*/ Niche*



**Nicchia  
+ pannello**  
*/ Niche + panel*



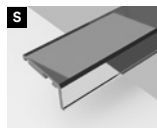
**Tondo**  
*/ Round*



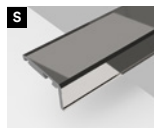
**Doppia porta**  
*/ Double door*

## PROFILI

/ Profiles



**A** - Argento  
/ Silver



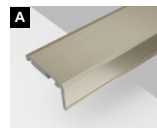
**C** - Cromo  
/ Chrome



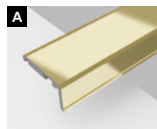
**W** - Bianco Matt  
/ Matt White



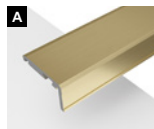
**N** - Nero  
/ Black



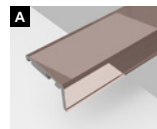
**B** - Bronzo Francese  
/ French Bronze



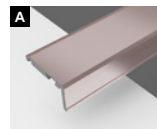
**D** - Oro  
/ Gold



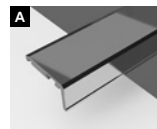
**O** - Oro Matt  
/ Matt Gold



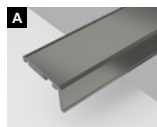
**R** - Oro Rosa  
/ Rose Gold



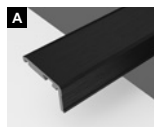
**P** - Oro Rosa Matt  
/ Matt Rose Gold



**H** - Titanio  
/ Titanium



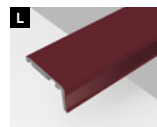
**K** - Titanio Brushed  
/ Brushed Titanium



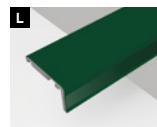
**Q** - Nero Brushed  
/ Brushed Black



**Y** - Avena  
/ Oats



**V** - Borgogna  
/ Burgundy



**M** - Muschio  
/ Musk



**J** - Terre Toscane  
/ Terre Toscane

## CRISTALLI

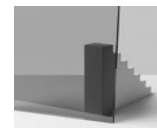
/ Glasses



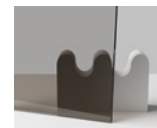
**TR** - Trasparente  
/ Transparent



**SA** - Satinato  
/ Satin



**GR** - Grigio Fumè  
/ Smoke Grey



**BP** - Bronzo Parsol  
/ Bronze Parsol



**SC** - Stopsol  
/ Stopsol



**EC** - Extra-Chiaro  
/ Extra-Clear



**SE** - Satin. Extra-Chiaro  
/ Extra-Clear Satin



**GS** - Grigio Satinato  
/ Satin Grey



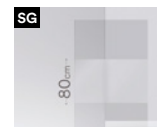
**FF** - Scratch  
/ Scratch



**Applicaz. Stripe**  
/ Stripe Application




**NV** - Nuvola  
/ Nuvola



**FS** - Fascia satinata  
/ Frosted band



**FT** - Fascia a righe  
/ Strip band

 Possibilità di trattamento Brillbox®  
/ Brillbox® treatment available

**S** Standard / Standard

**L** Laccato / Lacquered

**A** Anodizzato / Anodised

**AC** Acciaio AISI / AISI Steel

**SG** Serigrafie / Silk-screen Printing

# 3MILA



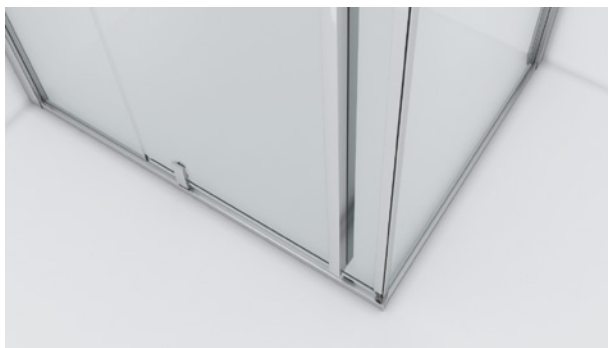
Eleganza, pulizia e rigore formale sono gli elementi che contraddistinguono la linea 3Mila. La possibilità di personalizzare il box doccia sulla base dell'ambiente che lo accoglie, rende questo prodotto flessibile, duttile, prezioso. La sua essenza minimale, sostenuta da una maniglia color acciaio, cromo o nero matt, è un indiscutibile pregio estetico.

*Elegance, cleanliness and formal rigour are the elements that distinguish the 3Mila line. The possibility to customize the shower enclosure based on the environment that welcomes it, makes this product flexible, versatile, precious. Its minimal essence, supported by a chrome steel or matt black handle, is of indisputed aesthetic value.*









## CONFIGURAZIONI

/ Configurations



**Angolo**  
*/ Corner*



**Angolo + pann.**  
*/ Corner + panel*



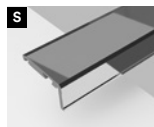
**Nicchia**  
*/ Niche*



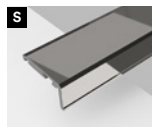
**Nicchia + pann.**  
*/ Niche + panel*

## PROFILI

/ Profiles



**A** - Argento  
/ Silver



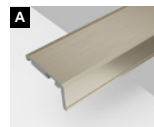
**C** - Cromo  
/ Chrome



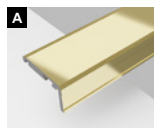
**W** - Bianco Matt  
/ Matt White



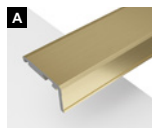
**N** - Nero  
/ Black



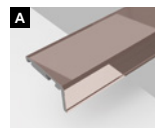
**B** - Bronzo Francese  
/ French Bronze



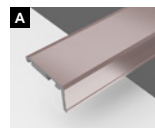
**D** - Oro  
/ Gold



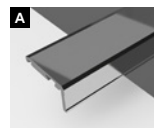
**O** - Oro Matt  
/ Matt Gold



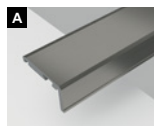
**R** - Oro Rosa  
/ Rose Gold



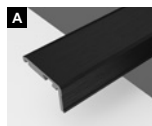
**P** - Oro Rosa Matt  
/ Matt Rose Gold



**H** - Titanio  
/ Titanium



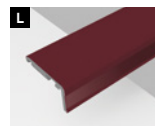
**K** - Titanio Brushed  
/ Brushed Titanium



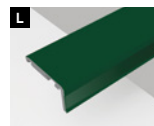
**Q** - Nero Brushed  
/ Brushed Black



**Y** - Avena  
/ Oats



**V** - Borgogna  
/ Burgundy



**M** - Muschio  
/ Musk



**J** - Terre Toscane  
/ Terre Toscane

## CRISTALLI

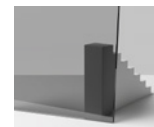
/ Glasses



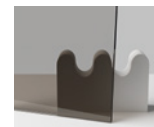
**TR** - Trasparente  
/ Transparent



**SA** - Satinato  
/ Satin



**GR** - Grigio Fumè  
/ Smoke Grey



**BP** - Bronzo Parsol  
/ Bronze Parsol



**SC** - Stopsol  
/ Stopsol



**EC** - Extra-Chiaro  
/ Extra-Clear



**SE** - Satin. Extra-Chiaro  
/ Extra-Clear Satin



**GS** - Grigio Satinato  
/ Satin Grey



**FF** - Scratch  
/ Scratch



**Applicaz. Stripe**  
/ Stripe Application



**NV** - Nuvola  
/ Nuvola



**FS** - Fascia satinata  
/ Frosted band



**FT** - Fascia a righe  
/ Strip band



Possibilità di trattamento Brillbox®  
/ Brillbox® treatment available

**S** Standard / Standard

**L** Laccato / Lacquered

**A** Anodizzato / Anodised

**AC** Acciaio AISI / AISI Steel

**SG** Serigrafie / Silk-screen Printing



# QUATTRO



Comfort e Design per tutti.

La serie Quattro è stata progettata per essere utilizzata in tutti gli spazi che necessitano di un box doccia versatile e comodo, senza barriere architettoniche, ma che non scende a compromessi nemmeno in fatto di design.

*Comfort and Design for everyone.*

*The Quattro series has been designed to be used in all spaces that require a versatile and comfortable shower, without architectural barriers, but that does not compromise even in design.*







## CONFIGURAZIONI

/ Configurations



**Angolo**  
*/ Corner*



**Angolo + pann.**  
*/ Corner + panel*



**Nicchia**  
*/ Niche*



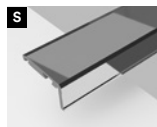
**Nicchia + pann.**  
*/ Niche + panel*



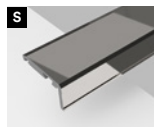
**Doppia porta**  
*/ Double door*

## PROFILI

/ Profiles



A - Argento  
/ Silver



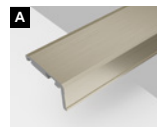
C - Cromo  
/ Chrome



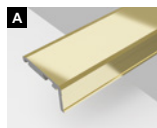
W - Bianco Matt  
/ Matt White



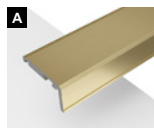
N - Nero  
/ Black



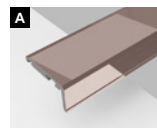
B - Bronzo Francese  
/ French Bronze



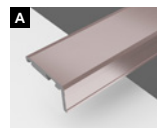
D - Oro  
/ Gold



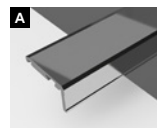
O - Oro Matt  
/ Matt Gold



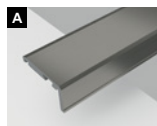
R - Oro Rosa  
/ Rose Gold



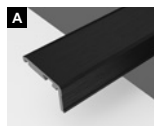
P - Oro Rosa Matt  
/ Matt Rose Gold



H - Titanio  
/ Titanium



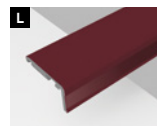
K - Titanio Brushed  
/ Brushed Titanium



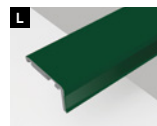
Q - Nero Brushed  
/ Brushed Black



Y - Avena  
/ Oats



V - Borgogna  
/ Burgundy



M - Muschio  
/ Musk



J - Terre Toscane  
/ Terre Toscane

## CRISTALLI

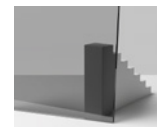
/ Glasses



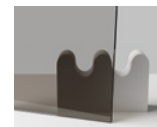
TR - Trasparente  
/ Transparent



SA - Satinato  
/ Satin



GR - Grigio Fumè  
/ Smoke Grey



BP - Bronzo Parsol  
/ Bronze Parsol



SC - Stopsol  
/ Stopsol



EC - Extra-Chiaro  
/ Extra-Clear



SE - Satin. Extra-Chiaro  
/ Extra-Clear Satin



GS - Grigio Satinato  
/ Satin Grey



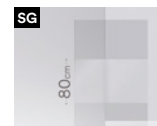
FF - Scratch  
/ Scratch



Applicaz. Stripe  
/ Stripe Application




NV - Nuvola  
/ Nuvola



FS - Fascia satinata  
/ Frosted band



FT - Fascia a righe  
/ Strip band

 Possibilità di trattamento Brillbox®  
/ Brillbox® treatment available

**S** Standard / Standard

**L** Laccato / Lacquered

**A** Anodizzato / Anodised

**AC** Acciaio AISI / AISI Steel

**SG** Serigrafie / Silk-screen Printing

# CLASSICA



Un gioco di alternanza tra motivi glamour a decori più classici. Una serie di grande lusso per rendere il bagno ancora più elegante e personalizzato.

*A game of alternation between glamorous patterns and more classical decorations. A series of great luxury to make the bathroom even more elegant and personalized.*













## CONFIGURAZIONI

/ Configurations



**Angolo**  
/ Corner



**Nicchia**  
/ Niche



**Nicchia + pann.**  
/ Niche + panel



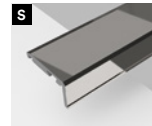
**Pannello fisso**  
/ Fixed panel



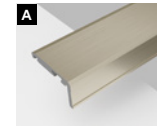
**Walk-in**

## PROFILI

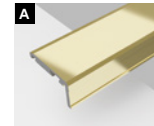
/ Profiles



**C - Cromo**  
/ Chrome



**B - Bronzo Francese**  
/ French Bronze



**D - Oro**  
/ Gold



**J - Terre Toscane**  
/ Terre Toscane

Vedi la pagina successiva per i vetri decorati

See the next page for glass decorations

## CRISTALLI

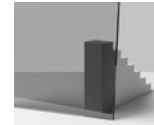
/ Glasses



**TR - Trasparente**  
/ Transparent



**SA - Satinato**  
/ Satin



**GR - Grigio Fumè**  
/ Smoke Grey



**BP - Bronzo Parsol**  
/ Bronze Parsol



**Applicaz. Stripe**  
/ Stripe Application



Possibilità di trattamento Brillbox®  
/ Brillbox® treatment available



**S** Standard / Standard



**L** Laccato / Lacquered



**A** Anodizzato / Anodised

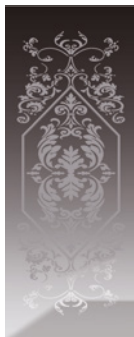


**AC** Acciaio AISI / AISI Steel



**SG** Serigrafie / Silk-screen Printing

## DECORI / Decorations



**Art Déco Negativo**  
*/ Negative Art Déco*



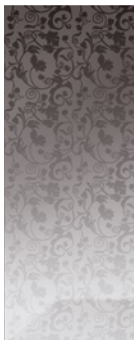
**Art Déco Positivo**  
*/ Positive Art Déco*



**Provenzale Negativo**  
*/ Negative Provençal*



**Provenzale Positivo**  
*/ Positive Provençal*



**Floresale Trasparente**  
Disponibile misura 160x200cm  
*/ Transparent Floral*  
Available size 160x200cm

## SWAROVSKI® ELEMENTS



**Light**



**Plus**

**Decorazioni personalizzate con Swarovski Elements® su richiesta.**  
*/ Personalised decorations and patterns with Swarovski Elements® upon request.*

# MILLE



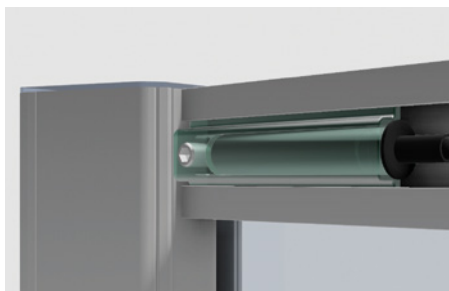
Scorrevole e battente, con la massima apertura e tenuta. Abbiamo dato il movimento perfetto al box doccia della serie Mille, neutralizzando i confini tra l'interno e l'esterno per percepire tutte le sensazioni dell'ambiente.

*Sliding, with maximum opening and water containment. We gave the perfect movement to the shower cubicle of the Mille series, neutralizing the boundaries between the inner and outer space to perceive all the sensations of the environment.*









## CONFIGURAZIONI

/ Configurations



**Angolo**  
*/ Corner*



**Angolo + pannello**  
*/ Corner + panel*



**Nicchia**  
*/ Niche*



**Nicchia + pannello**  
*/ Niche + panel*



**Tre lati**  
*/ Three sides*



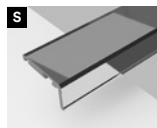
**Tondo**  
*/ Round*



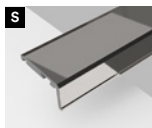
**Doppia porta**  
*/ Double door*

## PROFILI

/ Profiles



A - Argento  
/ Silver



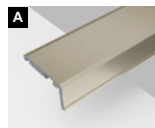
C - Cromo  
/ Chrome



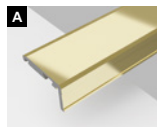
W - Bianco Matt  
/ Matt White



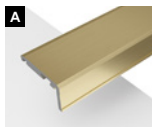
N - Nero  
/ Black



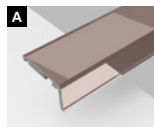
B - Bronzo Francese  
/ French Bronze



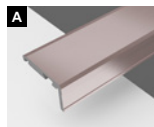
D - Oro  
/ Gold



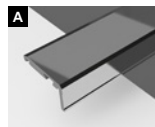
O - Oro Matt  
/ Matt Gold



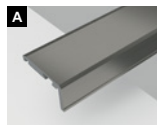
R - Oro Rosa  
/ Rose Gold



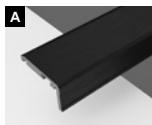
P - Oro Rosa Matt  
/ Matt Rose Gold



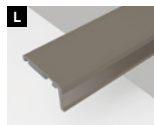
H - Titanio  
/ Titanium



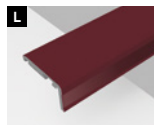
K - Titanio Brushed  
/ Brushed Titanium



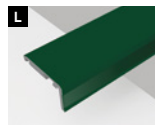
Q - Nero Brushed  
/ Brushed Black



Y - Avena  
/ Oats



V - Borgogna  
/ Burgundy



M - Muschio  
/ Musk



J - Terre Toscane  
/ Terre Toscane

## CRISTALLI

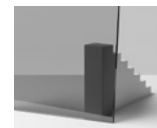
/ Glasses



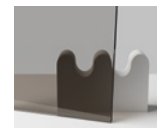
TR - Trasparente  
/ Transparent



SA - Satinato  
/ Satin



GR - Grigio Fumè  
/ Smoke Grey



BP - Bronzo Parsol  
/ Bronze Parsol



SC - Stopsol  
/ Stopsol



EC - Extra-Chiaro  
/ Extra-Clear



SE - Satin. Extra-Chiaro  
/ Extra-Clear Satin



GS - Grigio Satinato  
/ Satin Grey



FF - Scratch  
/ Scratch



Applicaz. Stripe  
/ Stripe Application




NV - Nuvola  
/ Nuvola



FS - Fascia satinata  
/ Frosted band



FT - Fascia a righe  
/ Strip band

 Possibilità di trattamento Brillbox®  
/ Brillbox® treatment available

**S** Standard / Standard

**L** Laccato / Lacquered

**A** Anodizzato / Anodised

**AC** Acciaio AISI / AISI Steel

**SG** Serigrafie / Silk-screen Printing

# 6000



Il box doccia è la "stanza" privata per eccellenza.  
La serie 6000, cristallo 8-6mm, è perfetta per i momenti  
di relax di ogni giorno. SPA, piscine, palestre, hotel e  
anche a casa: la doccia diventa un'esperienza straordinaria.

*The shower enclosure is the "private room" by excellence.  
The 6000 series, 8-6 mm crystal, is perfect for everyday  
relaxing moments. SPA, swimming pools, gyms, hotels and  
even at home: the shower becomes an extraordinary experience.*

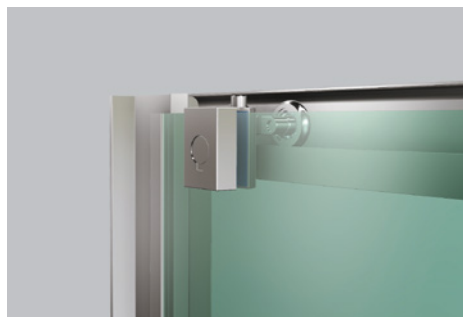
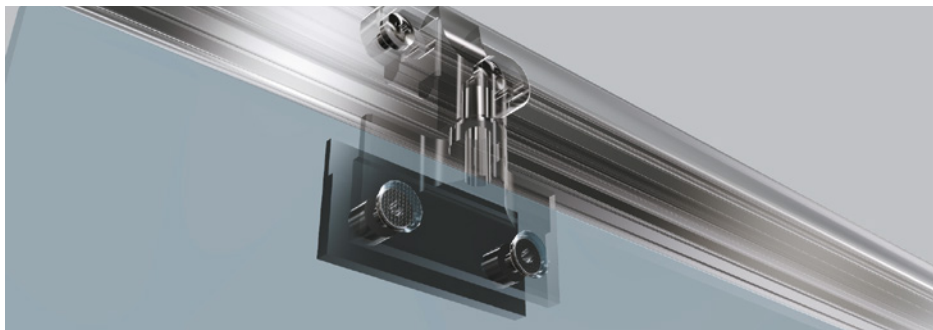












## CONFIGURAZIONI

/ Configurations



Angolo  
/ Corner



Nicchia  
/ Niche



Nicchia + pann.  
/ Niche + panel



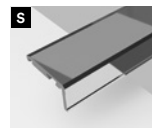
Tondo  
/ Round



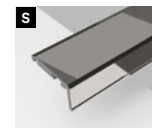
Doppia porta  
/ Double door

## PROFILI

/ Profiles



A - Argento  
/ Silver



C - Cromo  
/ Chrome



N - Nero  
/ Black



1 - Bianco Lucido  
/ Shiny White

## CRISTALLI

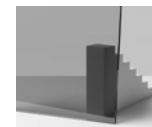
/ Glasses



TR - Trasparente  
/ Transparent



SA - Satinato  
/ Satin



GR - Grigio Fumè  
/ Smoke Grey



FT - Fascia a righe  
/ Strip band



Applicaz. Stripe  
/ Stripe Application



Possibilità di trattamento Brillbox®  
/ Brillbox® treatment available



Standard / Standard



Laccato / Lacquered



Anodizzato / Anodised



Acciaio AISI / AISI Steel



Serigrafie / Silk-screen Printing

# PARETI VASCA

/ Bath Screens



## CONFIGURAZIONI

/ Configurations



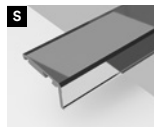
Parete Vasca  
/ Bathscreen

Le pareti vasca sono la soluzione perfetta per godersi il bagno, proteggendo l'ambiente circostante dagli schizzi. Oltre ad essere funzionali arredano il bagno con le finiture più contemporanee: dal nero matt al cristallo fumè, dal bronzo francese al cristallo satinato. Le pareti vasca coniugano il piacere della vasca da bagno con il sollievo della praticità.

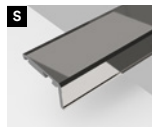
*The Bath Screens are the perfect solution to enjoy the bathroom while protecting the surroundings from splashes. As well as being functional, they decorate the bathroom with the most contemporary finishes: from matt black to smoked glass, from French bronze to satin-finish glass. Bath screens combine the pleasure of the bath with the relief of practicality.*

## PROFILI

/ Profiles



**A** - Argento  
/ Silver



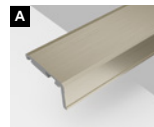
**C** - Cromo  
/ Chrome



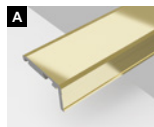
**N** - Nero  
/ Black



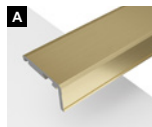
**W** - Bianco Matt  
/ Matt White



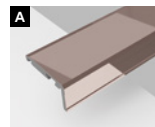
**B** - Bronzo Francese  
/ French Bronze



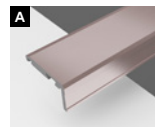
**D** - Oro  
/ Gold



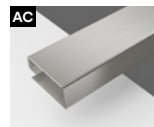
**O** - Oro Matt  
/ Matt Gold



**R** - Oro Rosa  
/ Rose Gold



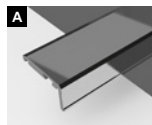
**P** - Oro Rosa Matt  
/ Matt Rose Gold



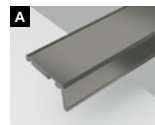
**S** - Acciaio Satinato  
/ Satin Steel



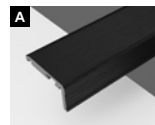
**N** - Acc. Nero Matt  
/ Matt Black Steel



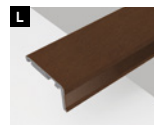
**H** - Titanio  
/ Titanium



**K** - Titanio Brushed  
/ Brushed Titanium



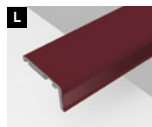
**Q** - Nero Brushed  
/ Brushed Black



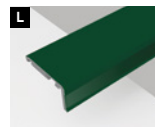
**J** - Terre Toscane  
/ Terre Toscane



**Y** - Avena  
/ Oats



**V** - Borgogna  
/ Burgundy



**M** - Muschio  
/ Musk

## CRISTALLI

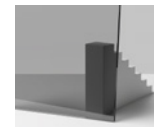
/ Glasses



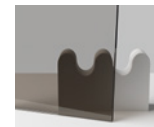
**TR** - Trasparente  
/ Transparent



**SA** - Satinato  
/ Satin



**GR** - Grigio Fumè  
/ Smoke Grey



**BP** - Bronzo Parsol  
/ Bronze Parsol



**SC** - Stopsol  
/ Stopsol



**EC** - Extra-Chiaro  
/ Extra-Clear



**Applicaz. Stripe**  
/ Stripe Application



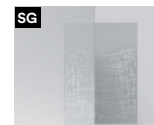
**NV** - Nuvola  
/ Nuvola



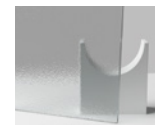
**FS** - Fascia satinata  
/ Frosted band



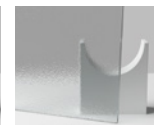
**FT** - Fascia a righe  
/ Strip band



**FF** - Scratch  
/ Scratch



**ST** - Stampato  
/ Printed



**Stampato Velo**  
/ Velo-Printed

**S** Standard / Standard

**L** Laccato / Lacquered

**A** Anodizzato / Anodised

**AC** Acciaio AISI / AISI Steel

**SG** Serigrafie / Silk-screen Printing



**2.B**



# 2.B

[boxdoce2b.com](http://boxdoce2b.com)

